

SanDisk Connect™ Wireless Flash Drive

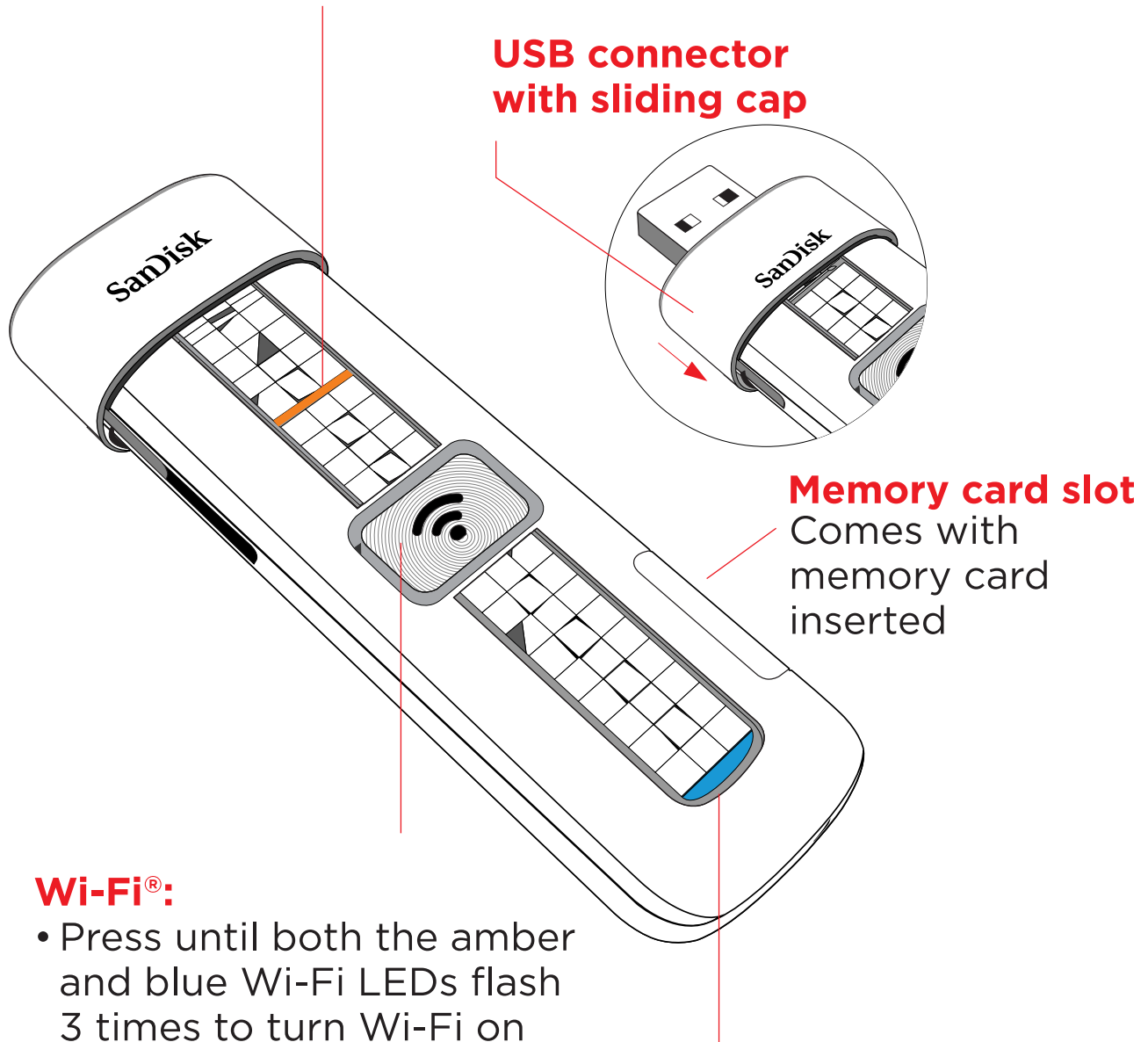
QUICK START GUIDE



SanDisk®

Amber USB/Charging LED:

- Shines steadily while charging
- Turns off when charged
- Flashes rapidly during USB data transfer



**USB connector
with sliding cap**

Memory card slot
Comes with
memory card
inserted

Wi-Fi®:

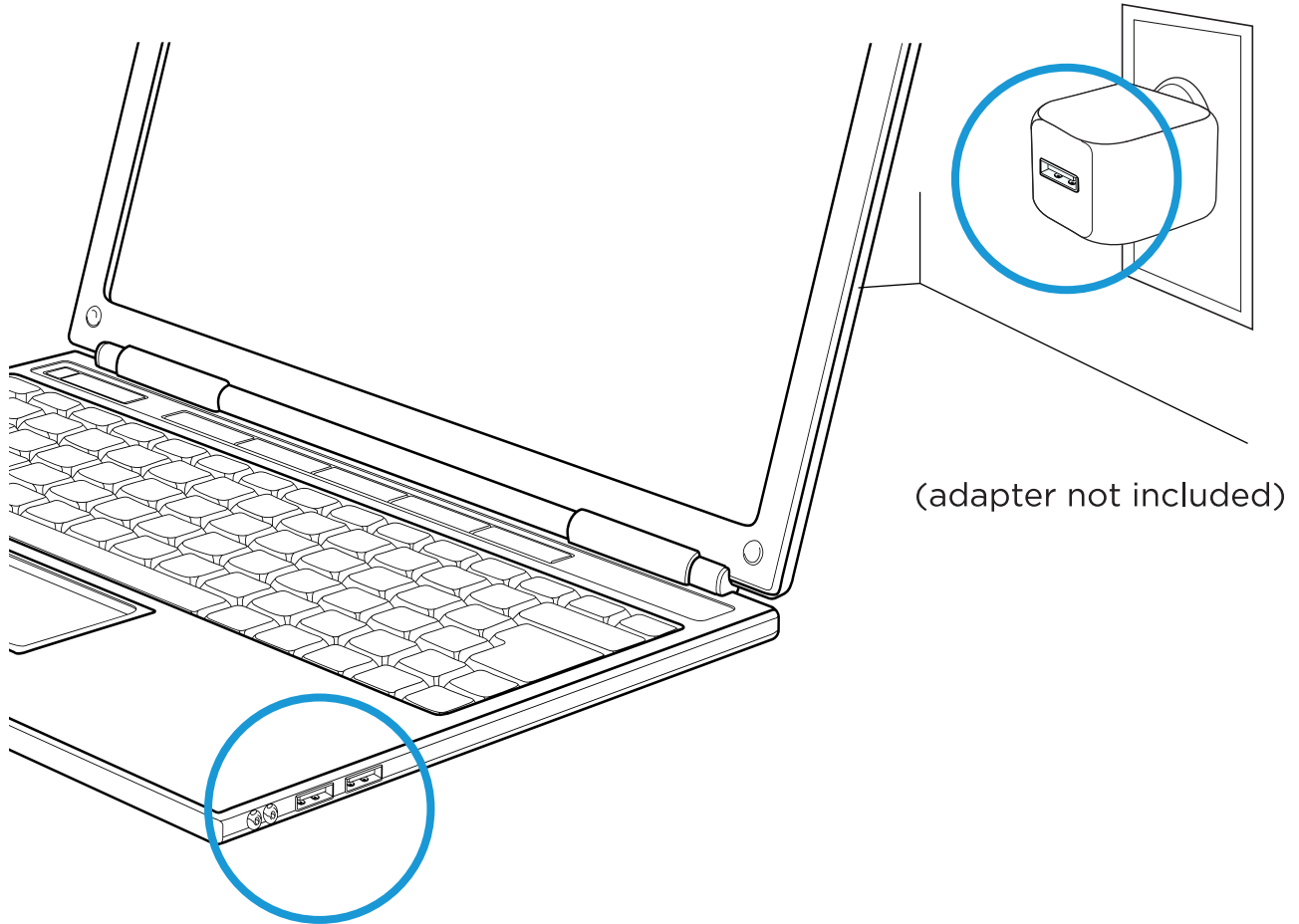
- Press until both the amber and blue Wi-Fi LEDs flash 3 times to turn Wi-Fi on
- Press until Wi-Fi LED goes out to turn Wi-Fi off

Blue Wi-Fi LED
Indicates the Drive
is broadcasting a
Wi-Fi signal

GET STARTED

1. Charge your Wireless Drive

Plug the Drive into a computer or USB-AC adaptor. A full charge can take up to 2 hours.



2) Turn on the Wireless Drive

Press the Wi-Fi power button until both LEDs flash 3 times.

3) Download the Wireless Flash Drive app

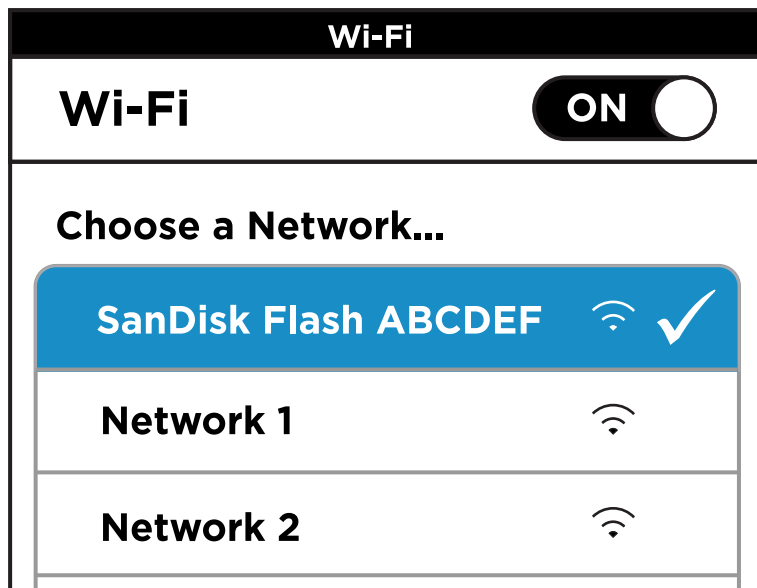
Download the free Wireless Flash Drive app from your mobile device application store.

4) Connect wirelessly to the Wireless Drive

(iOS app users only; if you're an Android™ app user, skip this step.)

Go to Wi-Fi Settings on your mobile devices and select the Wireless Drive network from the list of available Wi-Fi networks.

Note: No Internet connection or router is required.



Launch the Wireless Flash Drive app and start using your drive!

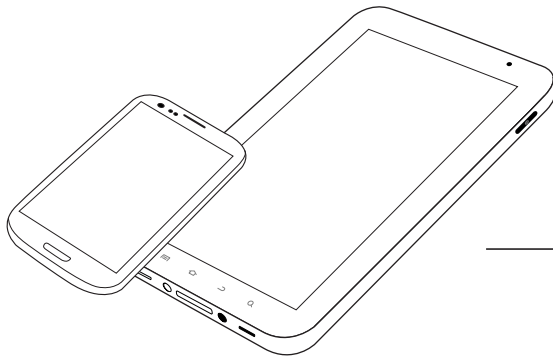
Note: For privacy, you can set a Wireless Flash Drive Wi-Fi password in Settings > Password.

WAYS TO LOAD CONTENT



Plug the Drive into a computer USB port, then drag and drop content onto it

OR



In the app, tap the  icon to transfer content via Wi-Fi from a mobile device

CONNECT VIA WEB BROWSER

You can also access content on the Wireless Drive without downloading the Wireless Flash Drive app.

1. Connect to the Wireless Drive Wi-Fi network.
2. Launch an Internet browser and go to www.sandisk.com/WFD/ to access the Wireless Drive content.

CONNECT TO THE INTERNET

Your mobile device or computer can wirelessly access content on your Drive and at the same time remain connected to the Internet as long as a wireless Internet network is available. (Some wireless networks might block this functionality.)

- 1.** Connect to your Wireless Drive and open the app.
- 2.** Go to Settings > Internet Connection Mode and turn on Enable Internet Connection.
- 3.** Select the desired network from the list of available networks.
- 4.** Exit the app and change your mobile device Wi-Fi connection to the same network selected in the app. You're now connected to both the Wireless Drive and the Internet. From now on, when you connect to this Internet network, it will automatically find the Drive.

Note: Creating a Wi-Fi password allows you to limit access to your Drive when connecting directly to it. But the Wi-Fi password does not limit access when your Drive is connected to an Internet Wi-Fi network, where anyone who has installed the Wireless Flash Drive app or knows the Wireless Drive URL can access your Drive.

HAVING TROUBLE?

THIS MIGHT HELP

- Download the latest Firmware from www.sandisk.com/support
- Make sure you're wirelessly connected to the Wireless Drive.
- Make sure the Wireless Drive is fully charged.
- Force the app to close:

Wireless Flash Drive app for Android: Go to Settings > Applications > Manage applications.

Wireless Flash Drive app for iOS: Double-press the Home button on your device, press and hold down the app icon until the Close symbol appears, and close the app.

- If you've forgotten your security password, press the power button for 30 seconds (until all the lights flash) to clear the password so you can set a new one.

NEED MORE HELP?

Support: www.sandisk.com/support

Watch the Wireless Flash Drive tutorial videos for more information. You can find them on the Wireless Flash Drive and the Support website.

FAQs and Forums can also be found on the Support website.

WIRELESS FLASH DRIVE INFO

Wireless Flash Drive User Manual: Go to www.sandisk.com/support > Connected Memory > Downloads and click Wireless Flash Drive User Manual.

Safety and Handling: See “Safety and Care” in the Wireless Flash Drive User Manual.

Battery: This product contains a Lithium-ion battery. The battery should be replaced only by SanDisk and its authorized service providers. SanDisk and its authorized service providers will ensure the spent battery is recycled properly, since batteries should always be recycled or disposed separately from household waste.

SanDisk One-Year Limited Warranty Summary: The SanDisk Connect Wireless Flash Drive is covered by a one (1) year limited warranty, subject to the applicable warranty terms and conditions, as defined at www.sandisk.com/wug.

Regulatory: Regulatory information, certification, and compliance marks are available on the device. For additional regulatory information, see the Wireless Flash Drive User Manual.

FCC Compliance Statement: This device complies with Part 15 of the FCC Rules. Operation is subject to the following two conditions: (1) This device may not cause harmful interference, and (2) This device must accept any interference received, including interference that may cause undesired operation.

Note: This equipment has been tested and found to comply with the limits of a Class B digital device, pursuant to Part 15 of the FCC Rules. These limits are designed to provide reasonable protection against harmful interference in a residential installation. This equipment generates uses and can radiate radio frequency energy and if not installed and used in accordance with the instructions, may cause harmful interference to radio communications. However, there is no guarantee that interference will not occur in a particular installation. If this equipment does cause interference to radio or television reception, which can be determined by turning the equipment off and then on, the user is encouraged to try to correct the interference by one or more of the following measures:

- Reorient or relocate the receiving antenna.
- Increase the separation between the equipment and receiver.
- Connect the equipment to a different outlet so that the equipment and receiver are on different branch circuits.
- Consult the dealer or an experienced radio/TV technician for help.

Important: Changes or modifications to this product not authorized by SanDisk could void the electromagnetic compatibility (EMC) and wireless compliance and negate your authority to operate the product. This product has demonstrated EMC compliance under conditions that include the use of compliant peripheral devices and shielded cables between system components. It is important that you use compliant peripheral devices and shielded cables between system components to reduce the possibility of causing interference to radios, televisions, and other electronic devices.

EU Disposal Information

Disposal & Recycling - Applicable in the European Union and other countries with separate collection systems. To prevent possible harm to the environment or human health from uncontrolled waste disposal, please separate the SanDisk Connect® Wireless Flash Drive from other types of wastes and recycle it responsibly to promote the sustainable reuse of material resources. Household users should contact either the retailer where they purchased this product, or their local government office, for details of where and how they can take this item for environmentally safe recycling. Business users should contact their supplier and check the terms and conditions of the purchase contract. This product should not be mixed with other commercial waste for disposal.

Recycling SanDisk Connect® Wireless Flash Drive

Do not dispose of either the SanDisk Connect® Wireless Flash Drive with your household waste. In some countries or regions, collection systems are set up to handle electrical and electronic waste items. Contact your regional authorities for more details. If collection systems are not available, please return unwanted accessories to any SanDisk Approved Service Center in your region.

EU Declaration of Conformity

Hereby, SanDisk declares that this SanDisk Connect® Wireless Flash Drive is in compliance with the essential requirements and other relevant provisions of Directive 1999/5/EC

EN 300 328 v1.7.1 (2006-10)

EN 301 489-17 v1.3.2 (2008-04)

EN 62311: 2008

©2013 SanDisk Corporation. All rights reserved.

SanDisk is a trademark of SanDisk Corporation, registered in the United States and other countries. Android is a trademark of Google Inc. Wi-Fi is a registered trademark of the Wi-Fi Alliance. All other trademarks are the property of their respective owners.

